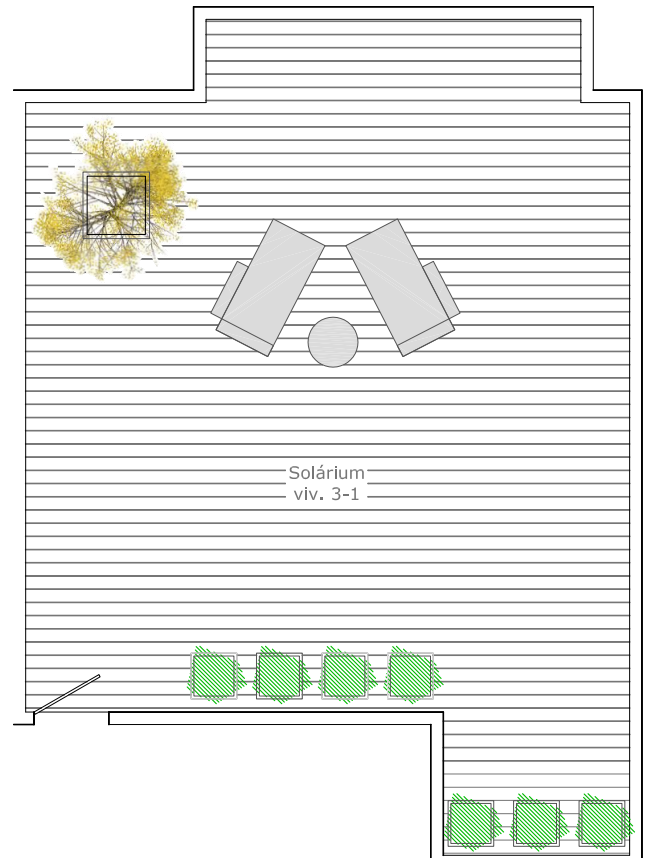
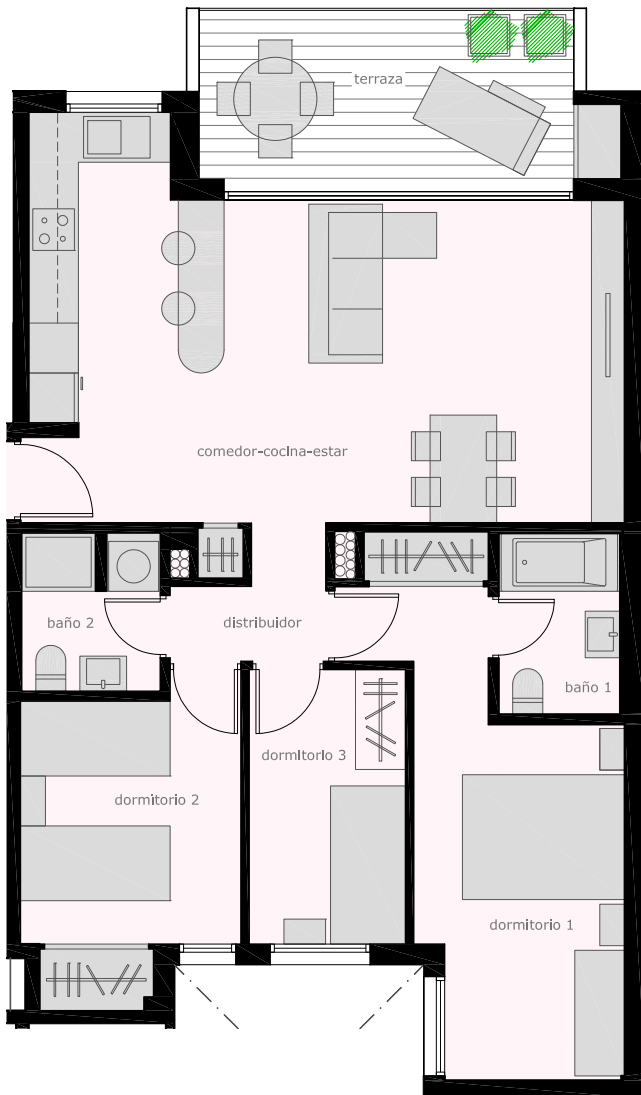
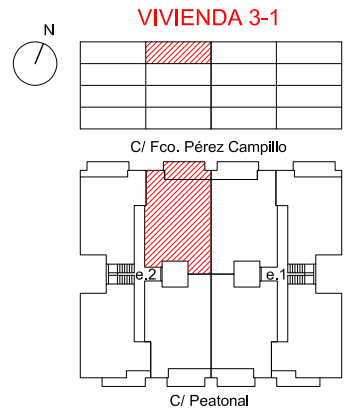


# FRANCISCO PÉREZ CAMPILLO 4-6



## SUPERFICIES ÚTILES INTERIORES (m<sup>2</sup>)

COCINA-ESTAR-COMEDOR	29,98
DISTRIBUIDOR	2,46
DORMITORIO 1	13,76
DORMITORIO 2	9,22
DORMITORIO 3	6,27
BAÑO 1	3,18
BAÑO 2	3,16

## SUPERFICIES ÚTILES EXTERIORES (m<sup>2</sup>)

TERRAZA CUBIERTA	10,29
SOLARIUM	61,54

## SUPERFICIE CONSTRUIDA (m<sup>2</sup>)

139,86	(incluye zonas comunes)	90,80
--------	-------------------------	-------