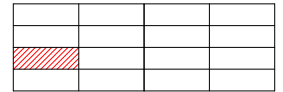


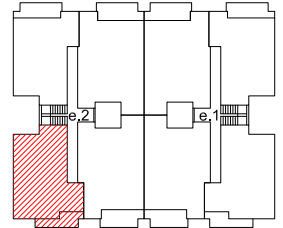
FRANCISCO PÉREZ CAMPILLO 4-6



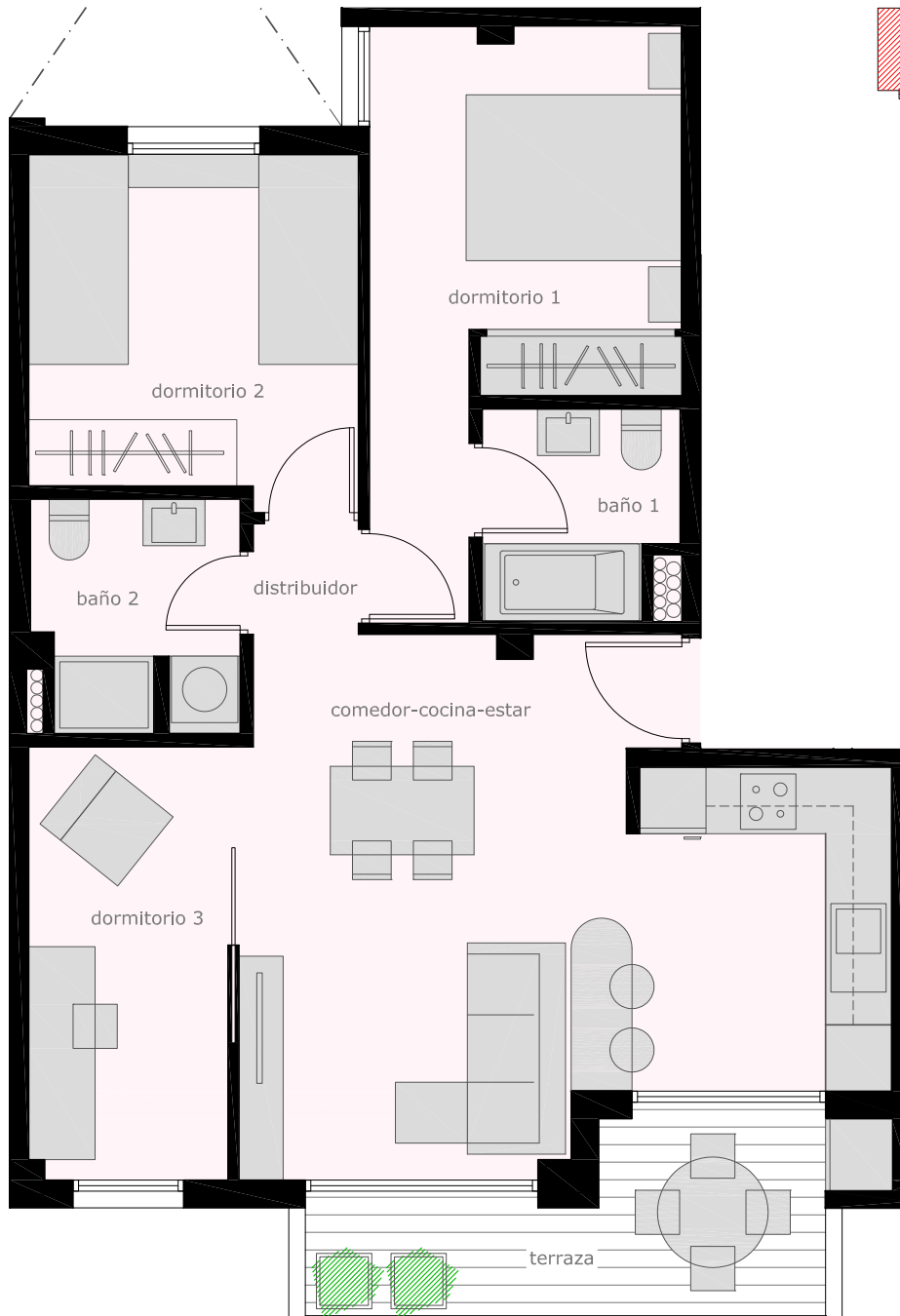
VIVIENDA 1-3



C/ Fco. Pérez Campillo



C/ Peatonal



SUPERFICIES ÚTILES INTERIORES (m²)

| | |
|----------------------|-------|
| COCINA-ESTAR-COMEDOR | 24,09 |
| DISTRIBUIDOR | 1,04 |
| DORMITORIO 1 | 11,42 |
| DORMITORIO 2 | 9,25 |
| DORMITORIO 3 | 7,20 |
| BAÑO 1 | 3,18 |
| BAÑO 2 | 3,81 |

SUPERFICIES ÚTILES EXTERIORES (m²)

| | |
|------------------|------|
| TERRAZA CUBIERTA | 7,20 |
| 67,19 | |

SUPERFICIE CONSTRUIDA (m²)

| | |
|-------------------------|--------------|
| (incluye zonas comunes) | 80,34 |
|-------------------------|--------------|