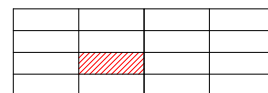


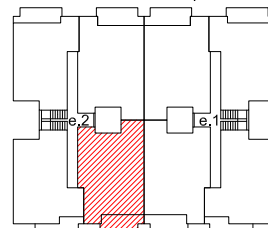
FRANCISCO PÉREZ CAMPILLO 4-6



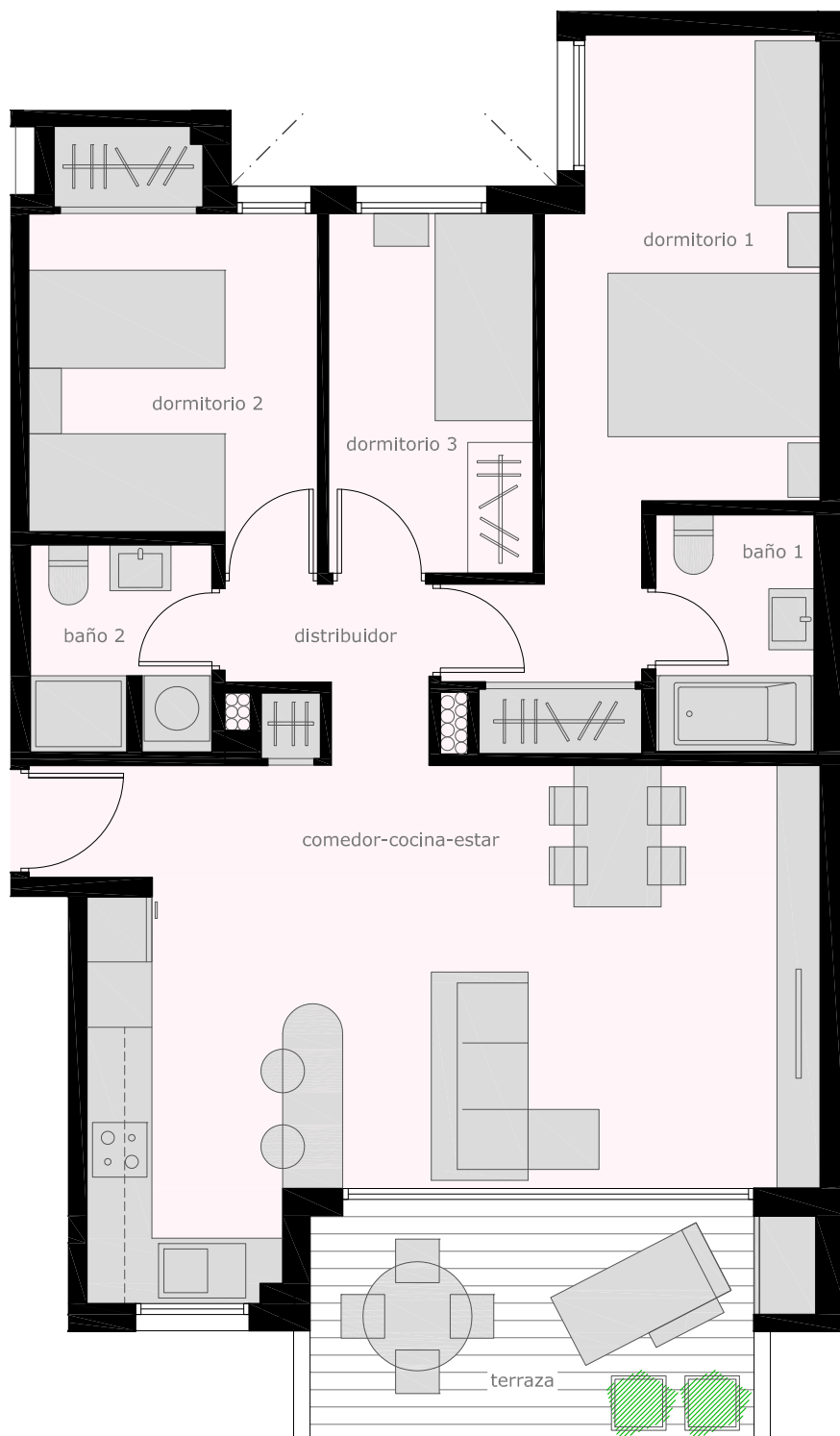
VIVIENDA 1-2



C/ Fco. Pérez Campillo



C/ Peatonal



SUPERFICIES ÚTILES INTERIORES (m²)

| | |
|----------------------|-------|
| COCINA-ESTAR-COMEDOR | 28,81 |
| DISTRIBUIDOR | 2,46 |
| DORMITORIO 1 | 13,75 |
| DORMITORIO 2 | 9,22 |
| DORMITORIO 3 | 6,27 |
| BAÑO 1 | 3,18 |
| BAÑO 2 | 3,16 |

SUPERFICIES ÚTILES EXTERIORES (m²)

| | |
|------------------|------|
| TERRAZA CUBIERTA | 9,35 |
| 76,20 | |

SUPERFICIE CONSTRUIDA (m²)

| | |
|-------------------------|--------------|
| (incluye zonas comunes) | 89,36 |
|-------------------------|--------------|